



 **STEEDEN**  
**2020 CATALOGUE**

The background image shows several football players in Steeden kits. One player's back is visible with the name 'MCLELLAND' and the number '37'. Other players are in the foreground and background, some with their arms around each other, suggesting a celebration. The kits feature various sponsor logos including 'Feel Good', 'NHS', 'CPM (CONTRACTS) LTD', 'Taylor Wimpey', 'STEEDEN', 'We Valley Asgates & Elling Ltd', and 'kp'.

# CONTENTS

## 3 MATCH KIT

- ④ Shirts
- ⑨ Shorts
- ⑪ Socks

## 12 TRAINING WEAR

- ⑬ T-Shirts
- ⑭ Polos
- ⑮ Hoodies
- ⑯ Anthem Jackets
- ⑰ Raincoats
- ⑱ Pants & Shorts

## 19 OTHER

- ⑳ Sizing
- ㉓ FAQ & Information
- ㉖ Terms & Conditions



# **MATCH KIT**

**SHIRTS   SHORTS   SOCKS**

# CUSTOM SHIRTS

## MATCH KIT



ANY DESIGN



ANY COLOUR

## COLLAR OPTIONS



ROUND  
COLLAR



EXPERT  
COLLAR



GUSSET EXPERT  
COLLAR



NZ  
COLLAR



TRADITIONAL  
COLLAR



MANDARIN  
COLLAR

## TECH INFORMATION



**FABRIC**  
100% POLYESTER  
VTEX



**CUSTOMISE**  
WITH ANY PATTERN



C1



C2



C9



C5



C12



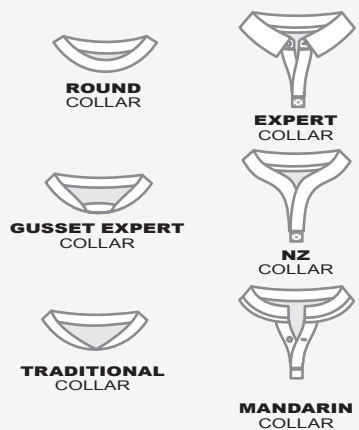
C3

# CUSTOM SHIRTS

## MATCH KIT



## COLLAR OPTIONS



## TECH INFORMATION



**FABRIC**  
100% POLYESTER  
VTEX



**CUSTOMISE**  
WITH ANY PATTERN



S1



S2



S3



S6



S4



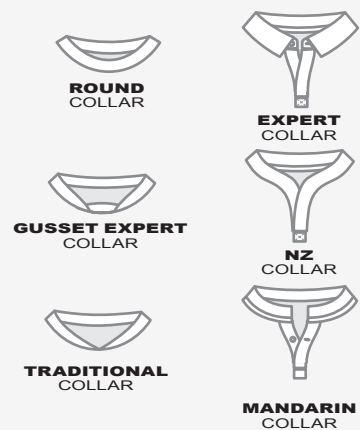
S7

# CUSTOM SHIRTS

## MATCH KIT



## COLLAR OPTIONS



## TECH INFORMATION



**FABRIC**  
100% POLYESTER  
VTEX



**CUSTOMISE**  
WITH ANY PATTERN



H1



H3



H9



H2



H11 B



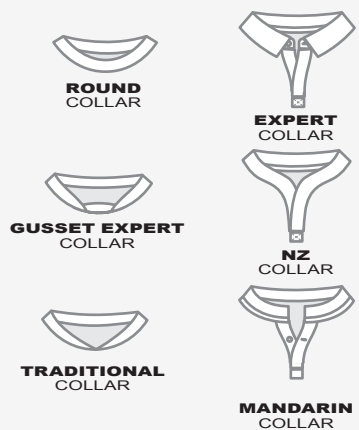
H4

# CUSTOM SHIRTS

## MATCH KIT



## COLLAR OPTIONS



## TECH INFORMATION



FABRIC  
100% POLYESTER  
VTEX



CUSTOMISE  
WITH ANY PATTERN



Q1



S13



S10



G8



Q2



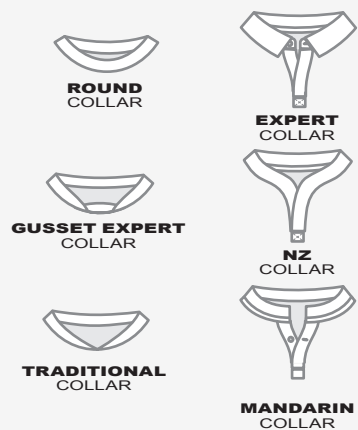
G9

# DESIGN YOUR OWN

## MATCH KIT



## COLLAR OPTIONS



## TECH INFORMATION



FABRIC  
100% POLYESTER  
VTEX



CUSTOMISE  
WITH ANY PATTERN



WANT SOMETHING UNIQUE?  
GET IN TOUCH FOR FULLY BESPOKE DESIGNS!

# SHORTS

## MATCH KIT



ANY COLOUR



SUBLIMATED  
PATTERNS  
AVAILABLE



CUT-AND-SEW  
VERSION  
AVAILABLE

## COLOUR OPTIONS



## TECH INFORMATION



FABRIC  
100% POLYESTER  
VTEX



S1



S2



S3



S5

# SHORTS

## MATCH KIT



ANY COLOUR



SUBLIMATED  
PATTERNS  
AVAILABLE



CUT-AND-SEW  
VERSION  
AVAILABLE

## COLOUR OPTIONS



## TECH INFORMATION



FABRIC  
100% POLYESTER  
VTEX



S13



S18 2



S20



S14

# SOCKS

ONE COLOUR



FULL HOOPS





**STEEDEN**

# **TRAINING WEAR**

**CLOTHING RANGES**

# T-SHIRTS

## MATCH KIT



ANY COLOUR  
COMBINATION



CUT-AND-SEW  
PRODUCT



SUBLIMATED  
PATTERNS  
AVAILABLE

## COLOUR OPTIONS



## TECHNICAL INFORMATION

**POLYLIGHT**

**FABRIC**  
100% POLYLIGHT



ARC T-SHIRT



EDGE T-SHIRT



VENOM T-SHIRT



VOLT T-SHIRT

# POLO SHIRT

## MATCH KIT



ANY COLOUR  
COMBINATION



CUT-AND-SEW  
PRODUCT



SUBLIMATED  
PATTERNS  
AVAILABLE

## COLOUR OPTIONS



## TECHNICAL INFORMATION

**POLYLIGHT**

**FABRIC**  
100% POLYLIGHT



ARC POLO SHIRT



EDGE POLO SHIRT



VENOM POLO SHIRT



VOLT POLO SHIRT

# HOODIE

## MATCH KIT



**ANY COLOUR  
COMBINATION**



**CUT-AND-SEW  
PRODUCT**



**SUBLIMATED  
PATTERNS  
AVAILABLE**

## COLOUR OPTIONS



## TECHNICAL INFORMATION

**MidTEX**

**FABRIC**  
100% MIDTEX



ARC HOODIE



EDGE HOODIE



VENOM HOODIE



VOLT HOODIE

# ANTHEM

## MATCH KIT



ANY COLOUR  
COMBINATION



CUT-AND-SEW  
PRODUCT



SUBLIMATED  
PATTERNS  
AVAILABLE

## COLOUR OPTIONS



## TECHNICAL INFORMATION

**Mid**TEX

**FABRIC**  
100% MIDTEX



ARC ANHEM



EDGE ANHEM



VENOM ANHEM



VOLT ANHEM

# RAINCOAT

## MATCH KIT



ANY COLOUR  
COMBINATION



CUT-AND-SEW  
PRODUCT



SUBLIMATED  
PATTERNS  
AVAILABLE

## COLOUR OPTIONS



## TECHNICAL INFORMATION

**Mid**TEX

**FABRIC**  
100% MIDTEX



ARC RAINCOAT



EDGE RAINCOAT



VENOM RAINCOAT



VOLT RAINCOAT

# PANTS & SHORTS

## MATCH KIT



**ANY COLOUR  
COMBINATION**



**CUT-AND-SEW  
PRODUCT**



**SUBLIMATED  
PATTERNS  
AVAILABLE**

## COLOUR OPTIONS



## TECHNICAL INFORMATION

**10FLEX**

**FABRIC  
PANTS  
100% 10FLEX**

**Actiweave**

**FABRIC  
GYM SHORTS  
100% ACTIWEAVE**



TRACK PANTS



SKINNY PANTS



GYM SHORTS



**BALLS**

# BALLS

## BALL OPTIONS



ANY DESIGN



ANY COLOUR



PICK  
YOUR SIZE

## TECH INFORMATION



RUBBER COMPOUND



CUSTOMISE  
WITH ANY PATTERN



LEAGUE MATCH



CLASSIC TRAINER



CLASSIC TOUCH



CLASSIC TOUCH



SYMMETRY



MIGHTY TOUCH

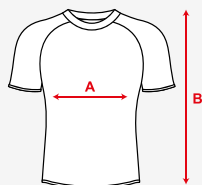


**WANT SOMETHING UNIQUE?**  
GET IN TOUCH FOR FULLY BESPOKE DESIGNS!



 **STEEDEN**

**SIZES**

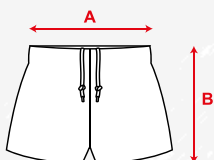


DUE TO MANUFACTURING PLEASE ALLOW 1.5CM TOLERANCE

	<b>SEMI-FIT JERSEY (ADULTS)</b>									
	<b>S</b>	<b>M</b>	<b>L</b>	<b>XL</b>	<b>2XL</b>	<b>3XL</b>	<b>4XL</b>	<b>5XL</b>	<b>6XL</b>	
<b>B</b>	Back Length									
<b>A</b>	Chest 3cm Below Armhole									
	72	74	76	78	80	82	83	85	87	
	51	53.5	56	58.5	61	63.56	66	68.57	71	

	<b>SEMI-FIT JERSEY (KIDS)</b>				
	<b>6</b>	<b>8</b>	<b>10</b>	<b>12</b>	<b>14</b>
	<b>XS</b>	<b>SB</b>	<b>MB</b>	<b>LB</b>	<b>XLB</b>
<b>A</b>	Chest Circumference				
<b>B</b>	Back Length				
	38	39.5	42	45	48
	50.5	53	55.5	59.5	63.5

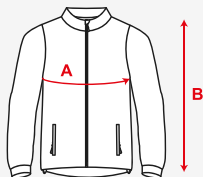
	<b>TIGHT FIT JERSEY</b>						
	<b>XS</b>	<b>S</b>	<b>M</b>	<b>L</b>	<b>XL</b>	<b>2XL</b>	<b>3XL</b>
<b>A</b>	Chest						
<b>B</b>	Back Length						
	46	48.5	51	53.5	56	58.5	61
	72	74	76	78	80	82	83



	<b>MATCH SHORTS (ADULTS)</b>										
	<b>XS</b>	<b>S</b>	<b>M</b>	<b>L</b>	<b>XL</b>	<b>2XL</b>	<b>3XL</b>	<b>4XL</b>	<b>5XL</b>	<b>6XL</b>	<b>7XL</b>
<b>A</b>	Waist Circumference Relaxed										
<b>B</b>	Outleg Length										
	67	72	77	82	87	92	97	102	107	112	117
	29	30	31	32	33	34	35	36	37	38	39

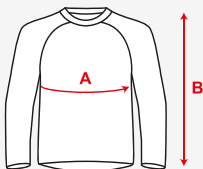
	<b>MATCH SHORTS (KIDS)</b>				
	<b>6</b>	<b>8</b>	<b>10</b>	<b>12</b>	<b>14</b>
<b>A</b>	Waist Circumference Relaxed				
<b>B</b>	Outleg Length				
	53	55	57	59	61
	23.5	26	28	31	33

DUE TO MANUFACTURING PLEASE ALLOW 1.5CM TOLERANCE



	<b>RAINJACKET (ADULTS)</b>	<b>XS</b>	<b>S</b>	<b>M</b>	<b>L</b>	<b>XL</b>	<b>2XL</b>	<b>3XL</b>	<b>4XL</b>
<b>A</b>	Chest Circumference	56.5	59	61.5	64	66.5	69	71.5	74
<b>B</b>	Front Length	74.5	76	77.5	79	80.5	82	83.5	85

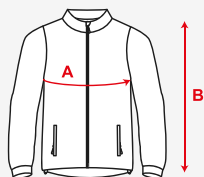
	<b>RAINJACKET (KIDS)</b>	<b>XSB</b>	<b>SB</b>	<b>MB</b>	<b>LB</b>	<b>XLB</b>
	AGE	<b>6</b>	<b>8</b>	<b>10</b>	<b>12</b>	<b>14</b>
<b>A</b>	Chest Circumference	44	49	51	53	54.5
<b>B</b>	Front Length	51	58	62	66	70



	<b>SMOCK (ADULTS)</b>	<b>XS</b>	<b>S</b>	<b>M</b>	<b>L</b>	<b>XL</b>	<b>2XL</b>	<b>3XL</b>	<b>4XL</b>
<b>A</b>	Chest Circumference	56.5	59	61.5	64	66.5	69	71.5	74
<b>B</b>	Front Length	74.5	76	77.5	79	80.5	82	83.5	85

	<b>SMOCK (KIDS)</b>	<b>XSB</b>	<b>SB</b>	<b>MB</b>	<b>LB</b>	<b>XLB</b>
	AGE	<b>6</b>	<b>8</b>	<b>10</b>	<b>12</b>	<b>14</b>
<b>A</b>	Chest Circumference	44	49	51	53	54.5
<b>B</b>	Front Length	51	58	62	66	70

DUE TO MANUFACTURING PLEASE ALLOW 1.5CM TOLERANCE

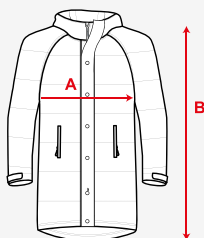


A  
B

<b>SOFTSHELL JACKET (ADULTS)</b>	<b>XS</b>	<b>S</b>	<b>M</b>	<b>L</b>	<b>XL</b>	<b>2XL</b>	<b>3XL</b>	<b>4XL</b>	<b>5XL</b>	<b>6XL</b>	<b>7XL</b>
Chest Circumference	54	56	59	61	64	66	69	71	74	76	70
Back Length	69	71	73	75	77	79	81	83	85	87	87

<b>SOFTSHELL JACKET (KIDS)</b>	<b>XSB</b>	<b>SMB</b>	<b>MDB</b>	<b>LGB</b>	<b>XLB</b>
AGE	<b>6</b>	<b>8</b>	<b>10</b>	<b>12</b>	<b>14</b>
Chest Circumference	43	45	47	50	53
Back Length	57	59	61	63	66

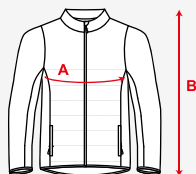
A  
B



A  
B

<b>SUB COAT</b>	<b>XS</b>	<b>S</b>	<b>M</b>	<b>L</b>	<b>XL</b>	<b>2XL</b>	<b>3XL</b>	<b>4XL</b>
Chest Circumference	63	68	70	72	74	76	78	80
Front Length	112	123	125	127	129	131	133	135

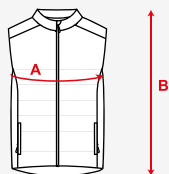
DUE TO MANUFACTURING PLEASE ALLOW 1.5CM TOLERANCE



A

B

<b>FUSION JACKET</b>	<b>S</b>	<b>M</b>	<b>L</b>	<b>XL</b>	<b>2XL</b>	<b>3XL</b>	<b>4XL</b>	<b>5XL</b>
Chest Circumference	54	56.5	59	61.5	64	66.5	69	71.5
Back Length	72	73.5	75	76.6	78	79.5	81	82.5



A

B

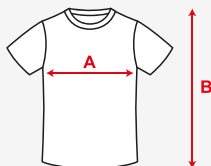
<b>FUSION GILET (ADULTS)</b>	<b>XS</b>	<b>S</b>	<b>M</b>	<b>L</b>	<b>XL</b>	<b>2XL</b>	<b>3XL</b>	<b>4XL</b>	<b>5XL</b>
Chest Circumference	52	54.5	57	59.5	62	64.5	67	69.5	72
Back Length	70.5	72	73.5	75	76.5	78	79.5	81	82.5

A

B

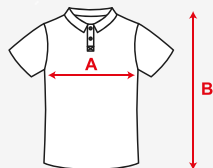
<b>FUSION GILET (KIDS)</b>	<b>XSB</b>	<b>SB</b>	<b>MB</b>	<b>LB</b>	<b>XLB</b>
AGE	<b>6</b>	<b>8</b>	<b>10</b>	<b>12</b>	<b>14</b>
Chest Circumference	40	42.5	45	47.5	50
Back Length	50	54	58	62	66

DUE TO MANUFACTURING PLEASE ALLOW 1.5CM TOLERANCE



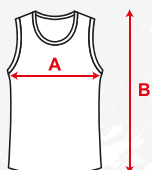
	<b>T-SHIRT (ADULTS)</b>	<b>XS</b>	<b>S</b>	<b>M</b>	<b>L</b>	<b>XL</b>	<b>2XL</b>	<b>3XL</b>	<b>4XL</b>	<b>5XL</b>	<b>6XL</b>
<b>A</b>	Chest Circumference	48	50.5	53	56	59	62	65	68	71	74
<b>B</b>	Back Length	68	70	72	74.5	77	79.5	82	85	87	90

	<b>T-SHIRT (KIDS)</b>	<b>XSB</b>	<b>SB</b>	<b>MB</b>	<b>LB</b>	<b>XLB</b>
	AGE	<b>6</b>	<b>8</b>	<b>10</b>	<b>12</b>	<b>14</b>
<b>A</b>	Chest Circumference	35	37.5	40	42.5	45.5
<b>B</b>	Back Length	49	51	53	55.5	66



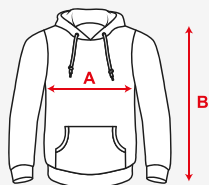
	<b>POLO SHIRT (ADULTS)</b>	<b>XS</b>	<b>S</b>	<b>M</b>	<b>L</b>	<b>XL</b>	<b>2XL</b>	<b>3XL</b>	<b>4XL</b>	<b>5XL</b>	<b>6XL</b>
<b>A</b>	Chest Circumference	48	50.5	53	56	59	62	65	68	71	74
<b>B</b>	Back Length	68	70	72	74.5	77	79.5	82	85	87	90

	<b>POLO SHIRT (KIDS)</b>	<b>XSB</b>	<b>SB</b>	<b>MB</b>	<b>LB</b>	<b>XLB</b>
	AGE	<b>6</b>	<b>8</b>	<b>10</b>	<b>12</b>	<b>14</b>
<b>A</b>	Chest Circumference	35	37.5	40	42.5	45.5
<b>B</b>	Back Length	49	51	53	55.5	66



	<b>VEST (ADULTS)</b>	<b>XS</b>	<b>S</b>	<b>M</b>	<b>L</b>	<b>XL</b>	<b>2XL</b>	<b>3XL</b>	<b>4XL</b>	<b>5XL</b>	<b>6XL</b>	<b>7XL</b>
<b>A</b>	Chest Circumference	49	51	53	55.5	58	60.5	63	66	68.5	71	74
<b>B</b>	Back Length	67	69	71	73	75	77	79	81	83	85	87

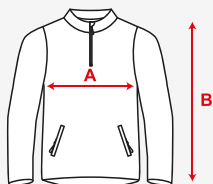
	<b>VEST (KIDS)</b>	<b>XSB</b>	<b>SB</b>	<b>MB</b>	<b>LB</b>	<b>XLB</b>
	AGE	<b>6</b>	<b>8</b>	<b>10</b>	<b>12</b>	<b>14</b>
<b>A</b>	Chest Circumference	35	38	41	44	47
<b>B</b>	Back Length	51	54	57	60	65



DUE TO MANUFACTURING PLEASE ALLOW 1.5CM TOLERANCE

	<b>HOODIE/ZOODIE/ANTHEM (ADULTS)</b>	<b>XS</b>	<b>S</b>	<b>M</b>	<b>L</b>	<b>XL</b>	<b>2XL</b>	<b>3XL</b>	<b>4XL</b>	<b>5XL</b>
<b>A</b>	Chest Circumference	53.5	55	59	61.5	64	66.5	69	71.5	73
<b>B</b>	Back Length	71	72.5	74	75.5	77	78.5	80	81.5	83

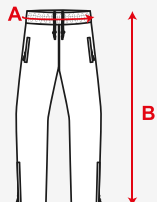
	<b>HOODIE/ZOODIE/ANTHEM (KIDS)</b>	<b>XSB</b>	<b>SMB</b>	<b>MDB</b>	<b>LGB</b>	<b>XLB</b>
	AGE	<b>6</b>	<b>8</b>	<b>10</b>	<b>12</b>	<b>14</b>
<b>A</b>	Chest Circumference	42	44	46	49	52
<b>B</b>	Back Length	52	56	60	64	68



	<b>MIDLAYER (ADULTS)</b>	<b>XS</b>	<b>S</b>	<b>M</b>	<b>L</b>	<b>XL</b>	<b>2XL</b>	<b>3XL</b>	<b>4XL</b>	<b>5XL</b>
<b>A</b>	Chest Circumference	50.5	53	55.5	58	60.5	63	65.6	68	70.5
<b>B</b>	Back Length	66	70	72	74	76	78	80	82	84

	<b>MIDLAYER (KIDS)</b>	<b>XSB</b>	<b>SMB</b>	<b>MDB</b>	<b>LGB</b>	<b>XLB</b>
	AGE	<b>6</b>	<b>8</b>	<b>10</b>	<b>12</b>	<b>14</b>
<b>A</b>	Chest Circumference	38	40.5	43	45.5	48
<b>B</b>	Back Length	54	56	58	62	64

## BOTTOMS



**DUE TO MANUFACTURING PLEASE ALLOW 1.5CM TOLERANCE**

	<b>TRAINING BOTTOMS (ADULTS)</b>	<b>S</b>	<b>M</b>	<b>L</b>	<b>XL</b>	<b>2XL</b>	<b>3XL</b>	<b>4XL</b>	<b>5XL</b>
<b>A</b>	Waist Circumference Relaxed	78	82	86	90	94	98	102	106
<b>B</b>	Outleg Length	103	105	107	109	111	113	115	117

	<b>TRAINING BOTTOMS (KIDS)</b>	<b>XSB</b>	<b>SB</b>	<b>MB</b>	<b>LB</b>	<b>XLB</b>
	<b>AGE</b>	<b>6</b>	<b>8</b>	<b>10</b>	<b>12</b>	<b>14</b>
<b>A</b>	Waist Circumference Relaxed	58	62	66	70	74
<b>B</b>	Outleg Length	80	86	94	99	101



	<b>TRAINING SHORT (ADULTS)</b>	<b>S</b>	<b>M</b>	<b>L</b>	<b>XL</b>	<b>2XL</b>	<b>3XL</b>	<b>4XL</b>	<b>5XL</b>
<b>A</b>	Waist Circumference	74	78	82	86	90	94	98	102
<b>B</b>	Outleg Length	43	45	47	49	51	53	55	57

	<b>TRAINING SHORT (KIDS)</b>	<b>XSB</b>	<b>SB</b>	<b>MB</b>	<b>LB</b>	<b>XLB</b>
	<b>AGE</b>	<b>6</b>	<b>8</b>	<b>10</b>	<b>12</b>	<b>14</b>
<b>A</b>	Waist Circumference	54	58	62	66	70
<b>B</b>	Outleg Length	32	34	36	38	40



# **FAQ & INFORMATION**

### **Q: How do I place an order?**

To place an order with us, simply e-mail a member of our sales team on [sales@steedenrugby.co.uk](mailto:sales@steedenrugby.co.uk) or visit [www.steedensports.com](http://www.steedensports.com) and contact us via the site.

### **Q: What information is required to place an order?**

When placing your order, we require the following information from you:

- Required delivery date
- Delivery address & contact details
- Invoicing details (if different from delivery)
- Preferred method of payment
- Products required
- Sizes per garment & quantities in each size
- Numbering details
- All club & sponsor logos

### **Q: Are there minimum order requirements?**

Yes, a minimum order of 10 per garment is required for all apparel.

### **Q: Am I able to see a sample of the garments?**

Yes, samples can be presented by a member of our sales team.

### **Q: How do I know what sizes we require?**

A member of our sales team will happily visit your club to complete a sizing event, alternatively you can view our sizing chart at the back of this catalogue.

### **Q: Can items be returned?**

Refunds and returns will not be accepted for any customised confirmed orders. However, if there is a fault with your delivered goods, or if we have failed to comply with agreed order instructions, simply notify a member of our team within 72 hours of delivery. Goods, once consulted on, must be returned in an unused condition.

### **Q: What file formats are required for artwork, branding and logos?**

The preferred format for all club and sponsor logos is PDF, EPS or AI – in high resolution. If you are unable to provide any of the required formats, logos can be re-drawn for a nominal fee. For further information please see the technical information section.

### **Q: Can you apply any logo onto one of your garments?**

We are able to apply any club or sponsor logo onto a garment, using either sublimation, heat pressing, or embroidery.

### **Q: Can you match my club's colours?**

We boast an extensive colour palette, capable of matching a huge amount of club colours. If you require an exact colour then a PMS number, or embroidery thread must be provided. Otherwise we will use the closest available colour from our palette. Please note that all colours presented in this catalogue, and on the official Steeden website, are for visual representation purposes only and there could be some minor variation in the finished product.

### **Q: What are your delivery charges?**

All orders are delivered to an address of your choice FREE of charge.

### **Q: What are your standard delivery times?**

We pride ourselves on both the quality of products and the level of our customer service – and we aim to deliver your goods as soon as possible. Standard lead times of 4-6 weeks are in place for all custom-made garments.

### **Q: What are my options for delivery?**

You can have orders delivered to an address of your choice or, depending on your location and availability, collect goods directly from our offices.

### **Q: How do I find out the price for the items I am interested in?**

Please drop us an e-mail on [sales@steedenrugby.co.uk](mailto:sales@steedenrugby.co.uk) with your kit requirements and our sales team will put together a fully bespoke quote for you.

### **Q: How do I know how much my order will cost?**

Once you have selected your required garments, design, and colour options, we will send a confirmation of cost and present you with an invoice, displaying the final amount due.

### **Q: Do you charge extra for adding logos to a kit, or an extra embroidery to garments?**

All designs, club and sponsors' logos on sublimated items are FREE of charge. Regarding embroidery on garments, your club logo and first sponsor logo is FREE of charge, with a small fee applied for the application of further logos. For any queries on pricing please contact your sales account manager directly or a member of the sales team on [sales@steedenrugby.co.uk](mailto:sales@steedenrugby.co.uk).

### **Q: When does VAT apply to my order?**

VAT applies to certain garment sizes and at age 14 and above. Please see the sizing section at the back of the catalogue to clarify where VAT will be applied to your order in terms of sizing. If you would like to double check, please don't hesitate to speak to one of our team.

### **Q: How do I pay for my order?**

There are several ways to complete your purchase. You will be required to pay 50% of the total order value up front, prior to delivery or collection. The remaining balance is due within five working days after goods have been received.

You can make payments via direct debit, or bank transfer, or by cheque. We also accept all major debit and credit cards.

**If you or your team have any further questions regarding any products, pricing, or production processes please do not hesitate to contact a member of our sales team via email on [sales@steedenrugby.co.uk](mailto:sales@steedenrugby.co.uk).**

# FABRICS

MATCH KIT & LEISUREWEAR

Please see below all information about the fabrics we use in all Iconic, Matchday, and Goalkeeping kits as well as our training wear. Please see page 40 for the range of colours available for training wear.



**Name:** vTex  
**Use:** Match Kits  
**Material:** 100% Polyester Interlock  
**Weight:** 140gsm  
**Properties:** Lightweight & Wicking

**POLY***LIGHT*

**Name:** PolyLight  
**Use:** T-Shirt, Polo  
**Material:** 100% Polyester Interlock  
**Weight:** 150gsm  
**Properties:** Lightweight & Wicking

**Mid***TEX*

**Name:** MidTEX  
**Use:** Hoodie, Anthem Jacket  
**Material:** Taslan  
**Weight:** 280gsm  
**Properties:** Stretchy & Warm



**Name:** AquaShield  
**Use:** Rainjacket  
**Material:** 100% Polyester Interlock  
**Weight:** 260gsm  
**Properties:** Showerproof



**Name:** ThermaForm  
**Use:** Managers Coat, Padded Gilet  
**Material:** Taslan & Padding  
**Weight:** 280gsm before padding  
**Properties:** Showerproof & Warm

**10***FLEX*

**Name:** 10 Flex  
**Use:** Track Pants, Skinny Pants  
**Material:** 100% Double-Knit Polyester  
**Weight:** 260gsm  
**Properties:** Versatile & Flexible



**Name:** Actiweave  
**Use:** Gym Shorts  
**Material:** 100% Polyester Weave  
**Weight:** 150gsm  
**Properties:** Lightweight & Tough

# CLUB BADGE

## & SPONSOR APPLICATION

### EMBROIDERY

Embroidery is the more traditional way of applying a Club logo or crest and is usually best suited to smaller designs, using embroidery for a centre chest sponsor will make the shirt heavy and less rigid.

Therefore, we only recommend embroidery for your club badge or crest, or smaller sponsor logos. If you specify embroidery then an embroidery disk is required – we can arrange to make one for you but a charge will apply.

### HEAT TRANSFER

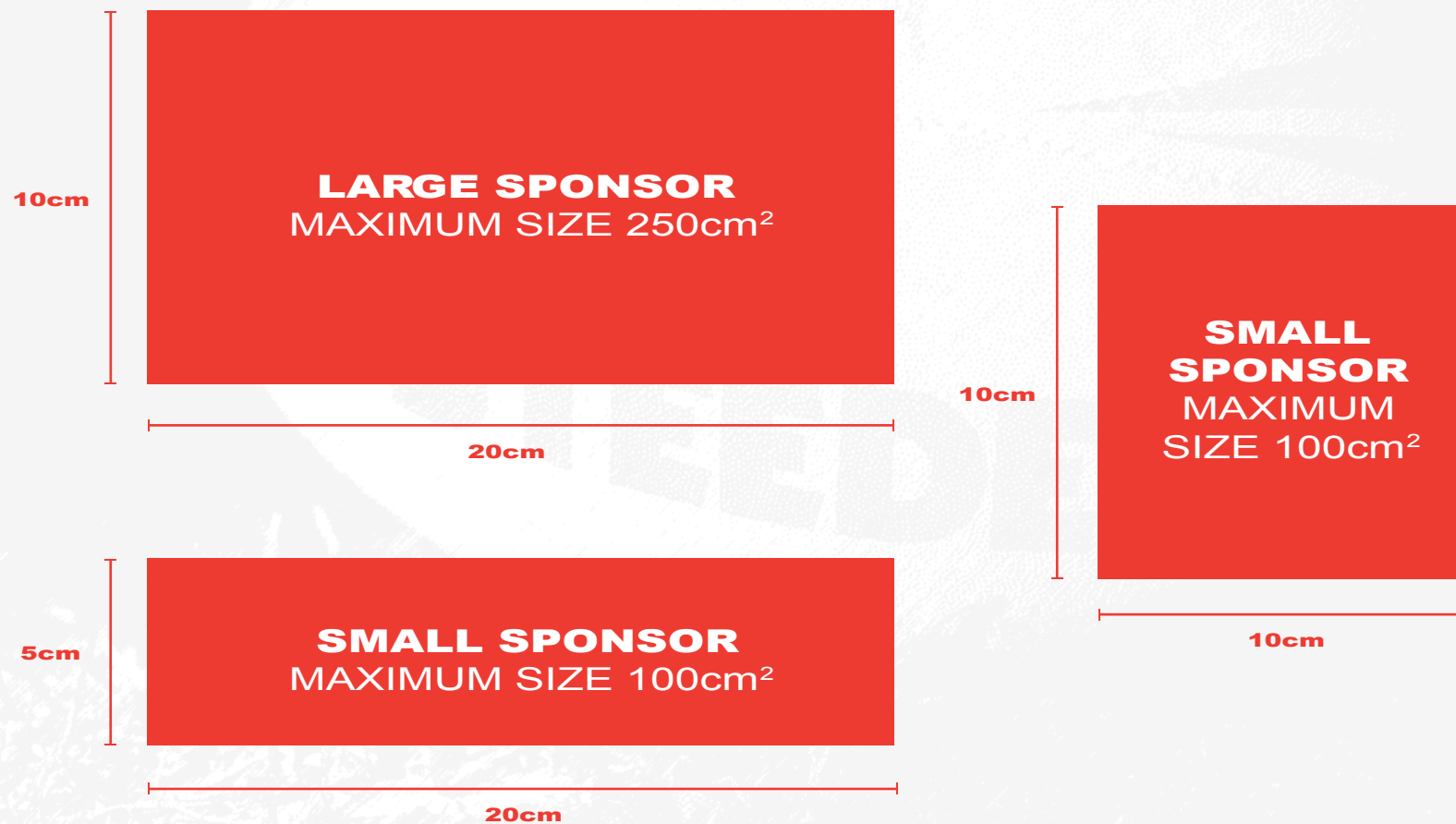
Heat transfer logos are a great alternative to embroidery as they are lighter and more flexible. They are particularly good for more detailed logos or small lettering and are being used increasingly by sports performance brands, due to their lightweight properties and flexibility.

Please ensure that wash instructions are followed when washing a garment with heat applications on - failure to do so may result in fading or damaging the heat applied aspect. make one for you but a charge will apply.

# SPONSOR

## SIZING DETAILS

All sponsor logos will be sublimated or applied as heat pressed vinyl (single colour) or digital print (multicolour). Sizing for this is limited, please see below for maximum sizing on logos. Please ensure that wash instructions are followed when washing a garment with heat applications on - failure to do so may result in fading or damaging the sponsor.





# **TERMS & CONDITIONS**

# STANDARD TERMS & CONDITIONS OF SALE

## 1. INTERPRETATION

- 1.1 **Buyer:** means the **customer/purchaser of Goods** from the Company
- 1.2 **Company:** mean **Advantage Sport Licences Ltd.** and all associated companies
- 1.3 **Contract:** means any contract between the Company and the Buyer for the sale and purchase of the Goods
- 1.4 **Delivery Point:** means the place where delivery of the Goods is to take place
- 1.5 **Goods:** means any goods agreed to be sold by the Company to the Buyer (including any part or parts of them) under the Contract

## 2. APPLICATION OF TERMS

- 2.1 All Goods sold by the Company are on the express understanding that the Buyer agrees to these Terms and Conditions of Sale to the exclusion of all other terms and conditions (including any terms or conditions which the Buyer purports to apply under any purchase order, confirmation of order, specification or other document).
- 2.2 The Company's acknowledgement of order (see paragraph 3.2 below) and these Terms and Conditions of Sale cannot be varied in any way other than by a written letter of authorisation signed by a director of the Company.
- 2.3 The Buyer acknowledges that it has not relied on any statement, promise or representation made or given by or on behalf of the Company which is not set out in the Contract. Nothing in this condition shall exclude or limit the Company's liability for fraudulent misrepresentation.

## 3. OFFER AND ACCEPTANCE

- 3.1 Each order or acceptance of a quotation for Goods by the Buyer from the Company shall be deemed to be an offer by the Buyer to purchase the Goods subject to these conditions.
- 3.2 No order placed by the Buyer shall be deemed to be accepted by the Company until a written acknowledgement of order (by email or other form of written communication) is issued by the Company or (if earlier) the Company delivers the goods to the Buyer.
- 3.3 Any quotation is given on the basis that no contract shall come into existence until the Company dispatches an acknowledgement of order (by email or other form of written communication) to the Buyer. Any quotation is valid for a period of 30 days only from its date, provided that the Company has not previously withdrawn it.
- 3.4 Once the Company accepts an order for Goods, the Buyer shall become liable to pay the invoices raised against such Goods on the due payment date, whether the Buyer cancels the order (or any part of it) or not.

## 4. DESCRIPTION

- 4.1 The quantity and description of Goods shall be as specified in the Company's acknowledgement of order.
- 4.2 Size, style, fabric content, specifications, quality, colour and suitability for purpose should be checked on receipt of goods, as worn, printed, embroidered or otherwise processed goods cannot be returned. Whilst every effort is made to ensure consistency of colours and shades, variation may occur from one dye batch to another and no responsibility can be accepted for this by the Company.
- 4.3 All sizes, measurements and descriptions are intended to provide general guidance only. They are approximate and no responsibility can be accepted by the Company for errors or omissions under any circumstances whatever.
- 4.4 The Company reserves the right for reasons of continuous improvement to make changes to the items shown in its catalogues without notice.

## 5. DELIVERY

- 5.1 Unless otherwise agreed in writing by the Company, delivery of the Goods shall take place at the Company's place of business.
- 5.2 Any dates specified by the Company in its acknowledgement of order for delivery of the Goods are intended to be an estimate and time for delivery shall not be made of the essence by notice. If no dates are so specified, delivery shall be within a reasonable time.
- 5.3 Subject to the other provisions of these conditions the Company shall not be liable for any direct, indirect or consequential loss, costs, damages, charges or expenses caused directly or indirectly by any delay in the delivery of the Goods (even if caused by the Company's negligence), nor shall any delay entitle the Buyer to terminate or rescind the Contract unless such delay exceeds 180 days.
- 5.4 If for any reason the Buyer fails to accept delivery of any of the Goods when they are ready for delivery, or the Company is unable to deliver the Goods on time because the Buyer has not provided appropriate instructions, documents, licenses or authorizations:
  - (a) risk in the Goods shall pass to the Buyer (including for loss or damage caused by the Company's negligence);
  - (b) the Goods shall be deemed to have been delivered; and
  - (c) the Company may store the Goods until delivery, whereupon the Buyer shall be liable for all related costs and expenses (including, without limitation, storage and insurance).
- 5.5 The Buyer shall provide at the Delivery Point and at its expense adequate and appropriate equipment and manual labour for loading the goods.
- 5.6 The Company reserves the right to deliver +/- 5% of the agreed quantity. The Buyer shall not be entitled to reject the Goods or any of them by reason of the surplus or shortfall and shall pay for such Goods at the pro rata contract rate.
- 5.7 Shortages and damaged items within a delivery must be reported to the Company in writing by return of post to reach the Company within 3 days of the Buyer receiving them, stating the relevant order and delivery note numbers and the date the delivery was received.
- 5.8 Exchange goods or garments for credit not having the relevant paperwork with delivery-invoice numbers will lead to delays in exchanging and non-issuance of credit notes. No returns will be accepted without prior confirmation and the issuing of a specific goods return number.
- 5.9 Goods dispatched to a third party (anybody other than the Buyer) are at the Buyer's risk. It is the Buyer's responsibility to ensure that the Goods are correct in every way before processing.
- 5.10 The Company may deliver the Goods by separate installments. Each separate instalment shall be invoiced and paid for in accordance with the provisions of the Contract.
- 5.11 Each installment shall be a separate Contract and no cancellation or termination of any one Contract relating to an installment shall entitle the Buyer to repudiate or cancel any other Contract or instalment.

## 6. RISK/TITLE

- 6.1 The property of the Goods shall not pass to the Buyer until:
  - (a) all sums due in respect of the Goods; and
  - (b) all other sums which are or which become due to the Company from the Buyer on any accounthave been received in full in cleared funds.
- 6.2 Until ownership of the Goods has passed to the Buyer, the Buyer shall:
  - (a) hold the Goods on a fiduciary basis as the Company's bailee;
  - (b) store the Goods (at no cost to the Company) separately from all other Goods of the Buyer or any third party in such a way that they remain readily identifiable as the Company's property;
  - (c) not destroy, deface or obscure any identifying mark or packaging on or relating to the Goods; and
  - (d) maintain the Goods in satisfactory condition and keep them insured on the Company's behalf for their full price against all risks to the reasonable satisfaction of the Company

- 6.3 Notwithstanding the foregoing, the goods are at the entire risk of the Buyer from the time of delivery.
- 6.4 The Buyer may resell the Goods before ownership has passed to it solely on the following basis:
- any sale shall be effected in the ordinary and normal course of the Buyer's business at full market value; and
  - any such sale shall be a sale of the Company's property on the Buyer's own behalf and the Buyer shall deal as principal when making such sale.
- 6.5 The Company, may without notice or liability, and without prejudice to any other legal remedy, enter upon the Buyer's premises to repossess any goods unpaid for.
- 6.6 The Buyer's right to possession of the goods shall terminate immediately if:
- the Buyer has a bankruptcy order made against him or makes an arrangement or composition with his creditors, or (being a body corporate) convenes a meeting of creditors, or enters into liquidation, or has a receiver and/or manager, administrator or administrative receiver appointed of its undertaking or any part thereof, or a resolution is passed or a petition presented to any court for the winding up of the Buyer or for the granting of an administration order in respect of the Buyer, or any proceedings are commenced relating to the insolvency or possible insolvency of the Buyer; or
  - the Buyer suffers or allows any execution, whether legal or equitable, to be levied on his/its property or obtained against him/it, or fails to observe or perform any of his/its obligations under the Contract or any other contract between the Company and the Buyer, or is unable to pay its debts within the meaning of section 123 of the Insolvency Act 1986 or the Buyer ceases to trade; or
  - the Buyer encumbers or in any way charges any of the Goods.
- 6.7 The Buyer grants the Company, its agents and employees an irrevocable license at any time to enter any premises where the Goods are or may be stored in order to inspect them, or, where the Buyer's right to possession has terminated, to recover them.
- 7. PRICE**
- 7.1 Unless otherwise agreed by the Company in writing, the price for the Goods shall be the price set out in the Company's invoice .
- 7.2 The price for the Goods shall be exclusive of any value added tax and all costs or charges in relation to packaging, loading, unloading, carriage and insurance, all of which amounts the Buyer shall pay in addition when it is due to pay for the Goods. V.A.T will be charged at the rate ruling on the date of the invoice.
- 8. PAYMENT**
- 8.1 Payment is to be made by the Buyer in pounds sterling in two equal payments, one upfront and one upon delivery, unless agreed otherwise at the time of order in writing by a director of the Company.
- 8.2 Time for payment shall be of the essence.
- 8.3 No payment shall be deemed to have been received until the Company has received cleared funds.
- 8.4 Samples requested will be invoiced to you on dispatch and will be credited in full provided they are returned to us unused, unworn and unaltered within 28 days of delivery, otherwise the rice including carriage and V.A.T. becomes immediately payable.
- 8.5 You shall pay our reasonable extra charges in respect of:-
- Any special arrangements made at your request in order to expedite delivery.
  - Costs, expenses and liabilities incurred by us where you give inadequate or inaccurate instructions.
  - Art work or production/origination time and materials where a request to produce goods and or a design commission is subsequently cancelled

- 8.6 The Buyer shall make all payments due under the Contract in full without any deduction whether by way of set-off, counterclaim, discount, abatement or otherwise unless the Buyer has a valid court order requiring an amount equal to such deduction to be paid by the Company to the Buyer. Please note that interest will be charged on overdue accounts at an annual rate of 4% above the prevailing base rate of Nat West Bank Plc from the due date for payment, accruing daily until payment is made whether before or after any judgment.
- 8.7 All payments payable to the Company under the Contract shall become due immediately on its termination despite any other provision contained within these conditions
- 9. QUALITY**
- 9.1 The Company warrants that (subject to the other provisions of these conditions) upon delivery the Goods shall be of satisfactory quality within the meaning of the Sale of Goods Act 1979 and shall be reasonably fit for their purpose.
- 9.2 The Company shall not be liable for a breach of any of the warranties in paragraph 9.1 if
- the Buyer notifies the Company of a defect and then makes further use of such Goods; or
  - a defect arises because the Buyer failed to follow the Company's oral or written instructions as to storage, use or maintenance of the goods.
- 9.3 Subject as aforesaid, if any of the Goods do not conform with any of the above warranties the Company shall at its option repair or replace such Goods (or the defective part) or refund the price of such Goods at the pro rata Contract rate provided that, if the Company so requests, the Buyer shall, at the Company's expense, return the Goods or the part of such Goods which is defective to the Company. If the Company complies with this paragraph 9.3 the Company shall have no further liability for a breach of any of the warranties in paragraph 9.1 in respect of such Goods.
- 10. LIMITATION OF LIABILITY**
- 10.1 All warranties, conditions and other terms implied by statute or common law (save for the conditions implied by section 12 of the Sale of Goods Act 1979) are, to the fullest extent permitted by law, excluded from the Contract.
- 10.2 Nothing in these conditions excludes or limits the liability of the Company:
- for death or personal injury caused by the Company's negligence; or
  - under section 2(3), Consumer Protection Act 1987; or
  - for any matter which it would be illegal for the Company to exclude or attempt to exclude its liability; or
  - for fraud or fraudulent misrepresentation.
- 10.3 Subject as aforesaid:
- the Company's total liability in contract, tort, misrepresentation, restitution or otherwise, arising in connection with the performance or contemplated performance of the Contract shall be limited to 2.5% of the invoice value of the Goods sold under the Contract less VAT; and
  - the Company shall not be liable to the Buyer for any pure economic loss, loss of profit, loss of business, depletion of goodwill or otherwise, in each case whether direct, indirect or consequential, or any claims for consequential compensation whatsoever (howsoever caused) which arise out of or in connection with the Contract.
- 10.4 Garment care - all products supplied should be washed or cleaned strictly in accordance with the washing and cleaning Instructions given. The Company shall not be responsible if these instructions are deviated from in any way. All items are provided with the relevant washing and cleaning label attached

## **11. FORCE MAJEURE**

- 11.1 Where the Company is unable to perform any of its obligations in this Contract due to any circumstances beyond its reasonable control including without limitation, acts of god, governmental actions, war or national emergency, acts of terrorism, protest, riot, civil commotion, fire, explosion, flood, epidemic, lockouts, strikes or other labour disputes or restraints or delays affecting carriers or inability or delay in obtaining supplies of adequate or suitable materials the Company reserves the right to:
- (a) suspend performance while those circumstances subsist and any agreed date or period for delivery shall be regarded as extended accordingly;
  - (b) cancel the Contract; or
  - (c) reduce the volume of the Goods ordered by the Buyer.

## **12. GENERAL**

- 12.1 Save as is otherwise agreed in writing all copyright, design rights, trademark rights, patents and any other intellectual publishing rights of any nature whatsoever in any artwork, design or goods or materials or their get up supplied, manufactured, designed or otherwise produced by the Company shall at all times be and remain the exclusive property of the Company
- 12.2 The Company may assign the Contract or any part of it to any person, firm or company. The Buyer shall not be entitled to assign the Contract or any part of it without the prior written consent of the Company.
- 12.3 Each right or remedy of the Company under the Contract is without prejudice to any other right or remedy of the Company whether under the Contract or not.
- 12.4 If any provision of the Contract is found by any court, tribunal or administrative body of competent jurisdiction to be wholly or partly illegal, invalid, void, voidable, unenforceable or unreasonable it shall to the extent of such illegality, invalidity, voidness, voidability, unenforceability or unreasonableness be deemed severable and the remaining provisions of the Contract and the remainder of such provision shall continue in full force and effect.
- 12.5 Failure or delay by the Company in enforcing or partially enforcing any provision of the Contract shall not be construed as a waiver of any of its rights under the Contract.
- 12.6 Any waiver by the Company of any breach of, or any default under, any provision of the Contract by the Buyer shall not be deemed a waiver of any subsequent breach or default and shall in no way affect the other terms of the Contract.
- 12.7 The parties to the Contract do not intend that any terms of the Contract shall be enforceable by virtue of the contracts (Rights of Third Parties) Act 1999 by any person that is not a party to it.
- 12.8 The formation, existence, construction, performance, validity and all aspects of the Contract shall be governed by English law and the parties submit to the non-exclusive jurisdiction of the English courts.
- 12.9 Unless expressly stated otherwise in these Terms and Conditions, all notices and communications between the parties shall be served in writing personally, by recorded delivery, by pre-paid first class post or by facsimile transmission to the registered office address (or such other address as agreed between the parties) of the addressee (or if to someone other than a company, to his last known address). Notices and communications shall be deemed to have been received if delivered by hand, on the day of delivery, if by recorded delivery, one day after posting, if by first class post, two days after posting (and in each case excluding the day of posting and excluding Saturdays, Sundays and bank holidays) and if by facsimile on a working day prior to 4pm at the time of transmission and otherwise on the next working day. Where a notice or communication by email is expressly permitted by these Terms and Conditions, such notice or communication shall be deemed to have been received on confirmation of transmission. In proving the service of any email it shall be sufficient to prove that such email was sent to a current email address of the addressee.